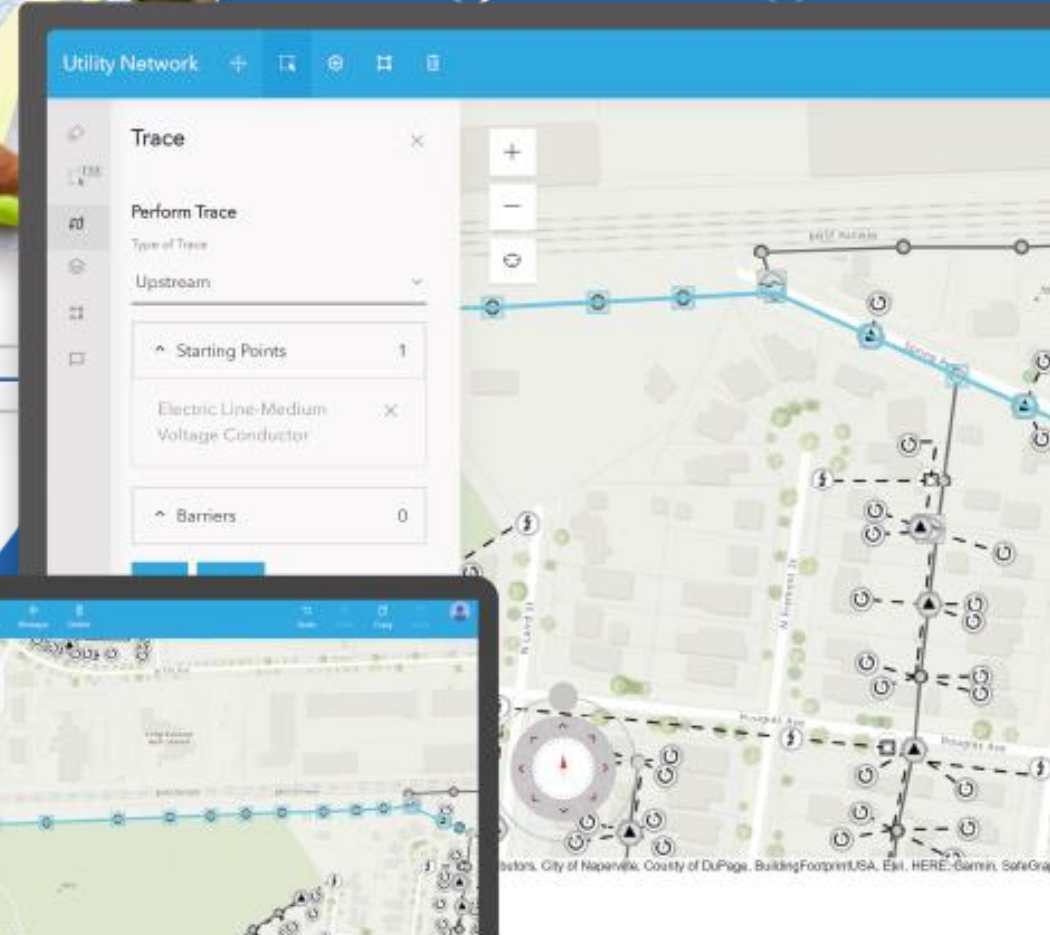




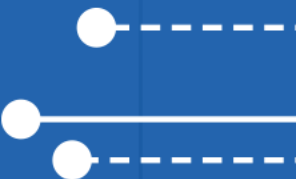
UNE for ArcGIS

Powering Modern Utility Operations in a Web Application



Overview

- What is UNE for ArcGIS
- Technical demonstration
- Modernising your Workflows
- What's new in UNE?



UNE for ArcGIS

ArcGIS Pro



ArcGIS Field Maps



ArcGIS Utility Network



Integration



Network



Landbase

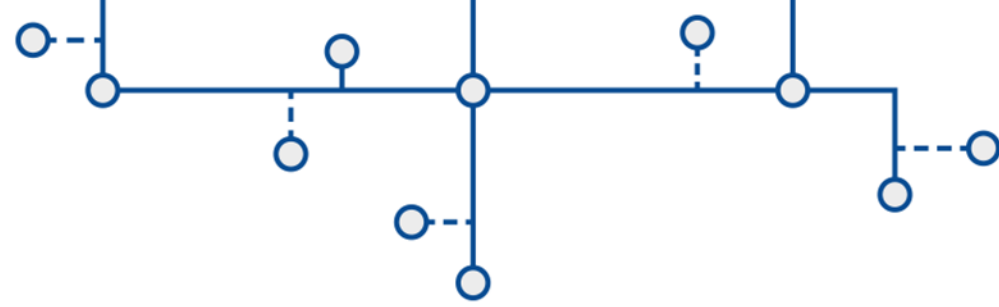


Real-Time





UNE for ArcGIS



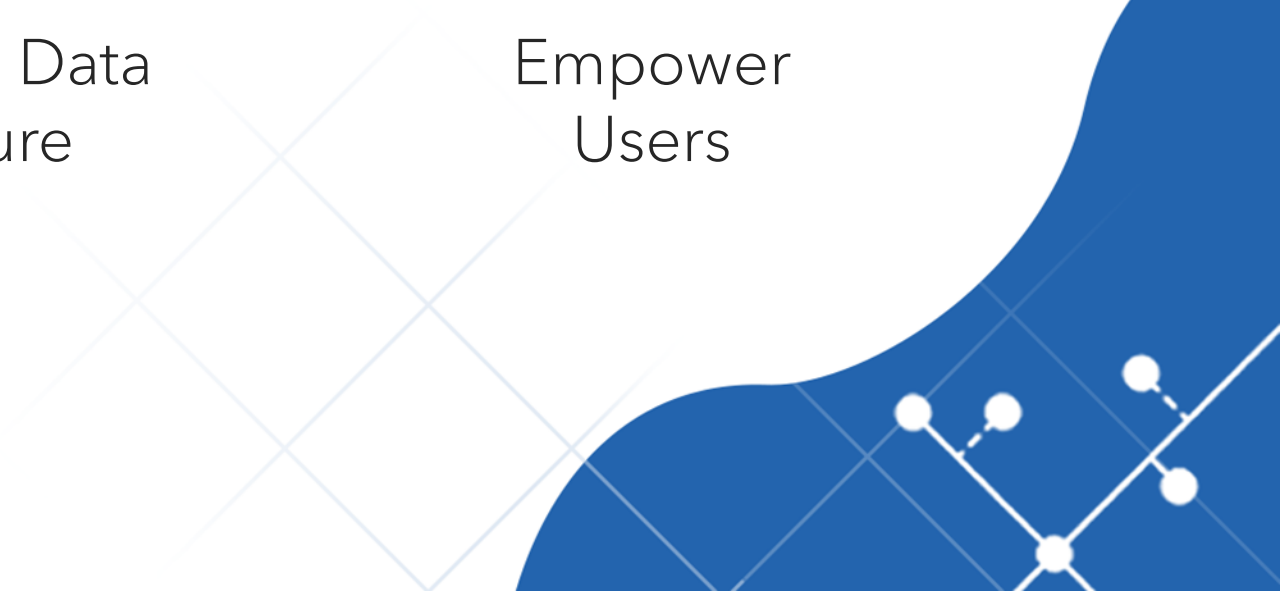
Web Solution



Improve Data Capture

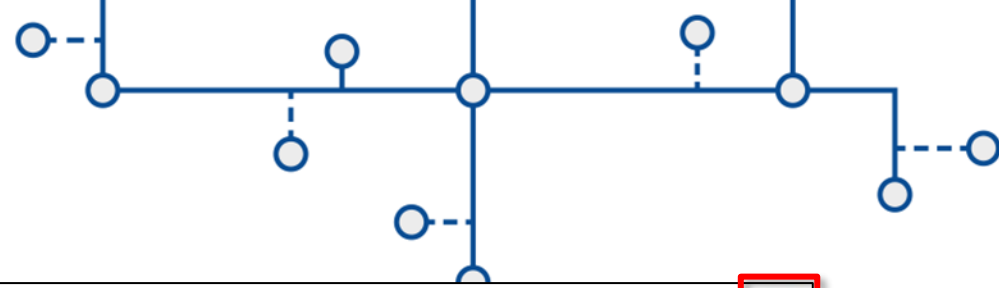


Empower Users





UNE for ArcGIS



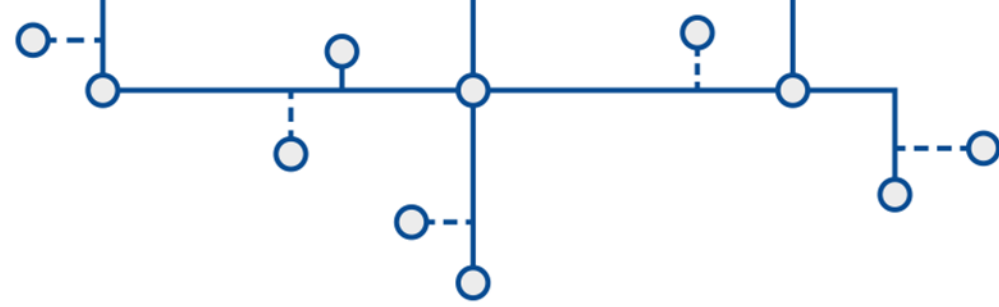
The screenshot displays the ArcGIS interface for a utility network. The map shows a residential area with streets like Ticonderoga Ln, Menominee Ln, Chickasaw Dr, and Pawnee Ln. The network is represented by green dashed lines and blue circular nodes. Several UI elements are highlighted with red boxes:

- Top Left:** A toolbar with 'Pan', 'Select', and 'Create' icons.
- Left Panel:** A blue sidebar menu with options: 'Work order ID', 'Find', 'Trace', 'Versioning', 'Layers', and 'Plans'.
- Bottom Left:** A circular navigation control with directional arrows.
- Top Right:** A toolbar with 'Undo', 'Redo', 'Copy', and 'Paste' icons, and a user profile icon.
- Bottom Right:** A toolbar with icons for 'Share', 'Print', 'Layers', and 'Full Screen'.

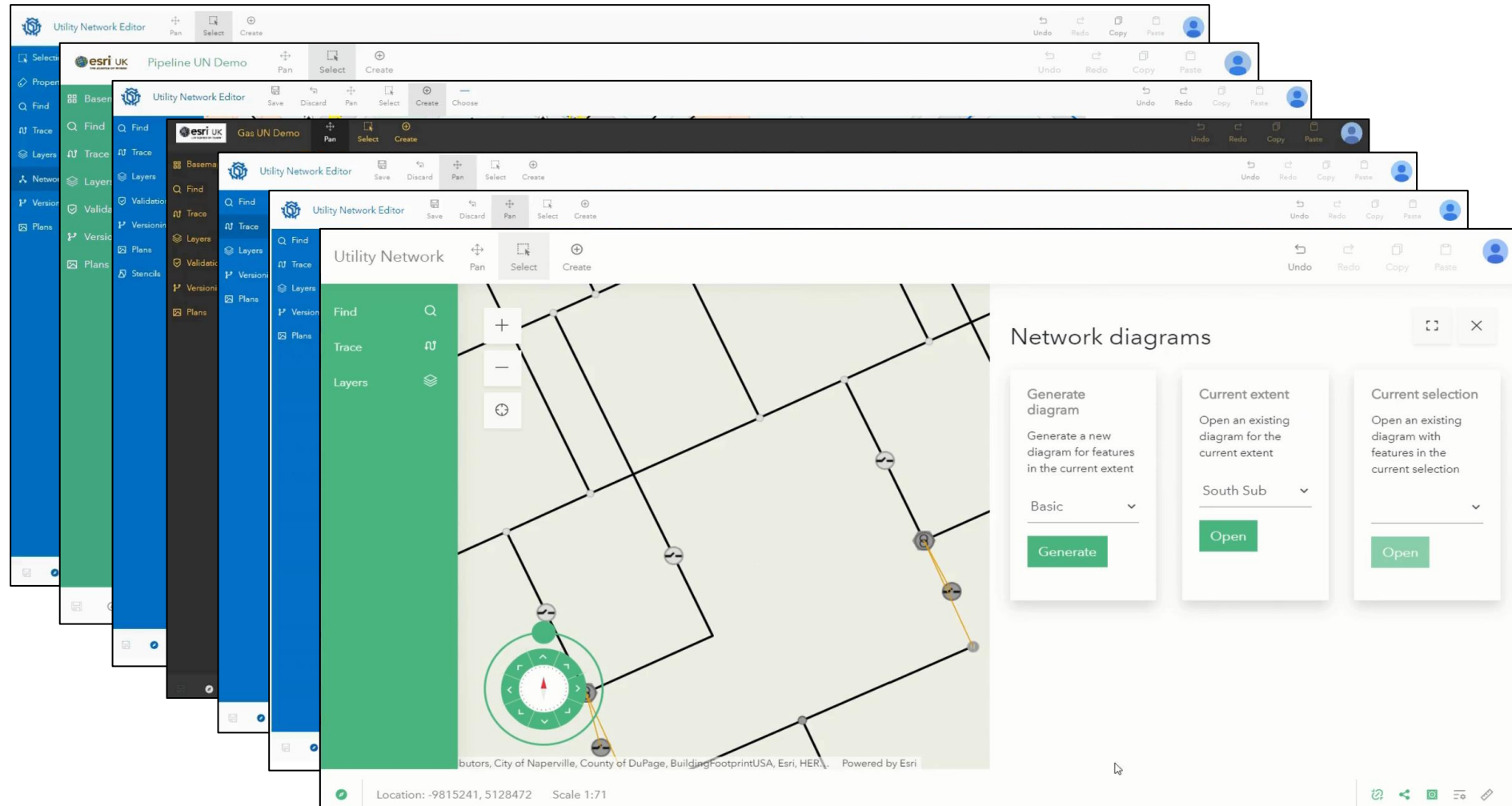
At the bottom of the map, the location is given as `-9810914, 5130646` and the scale is `1:2257`. The footer contains copyright information for Esri, NASA, NGA, USGS, FEMA, and other contributors.



UNE for ArcGIS

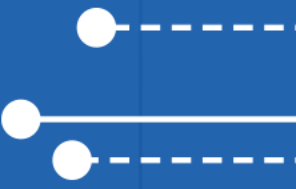


- Understands Network rules
- Recognises containment and associations
- Enables smart editing
- Georeferences plans
- Performs network tracing
- Summarises subnetworks
- Displays network diagrams





Modernising your workflows

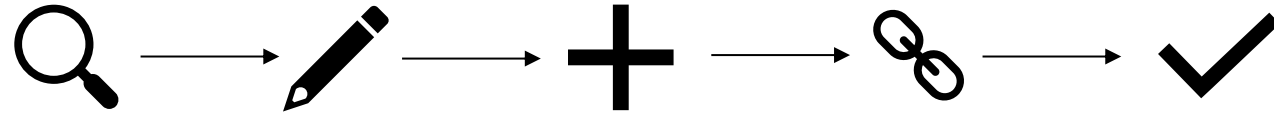




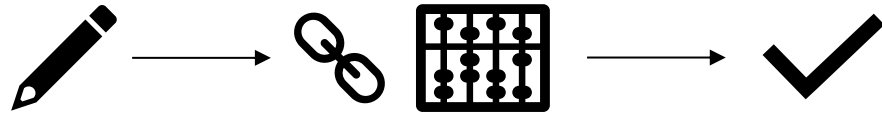
Customer Workflows



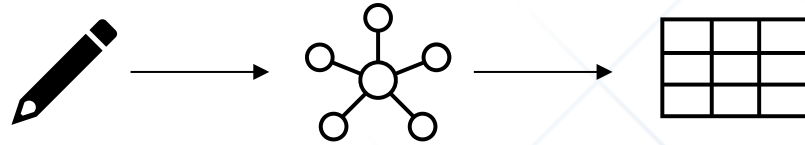
Asset Editing



Advanced Digitising



Subnetwork Optimisation



Coordinating processes





Customer Workflows



Asset Editing



Advanced Digitising



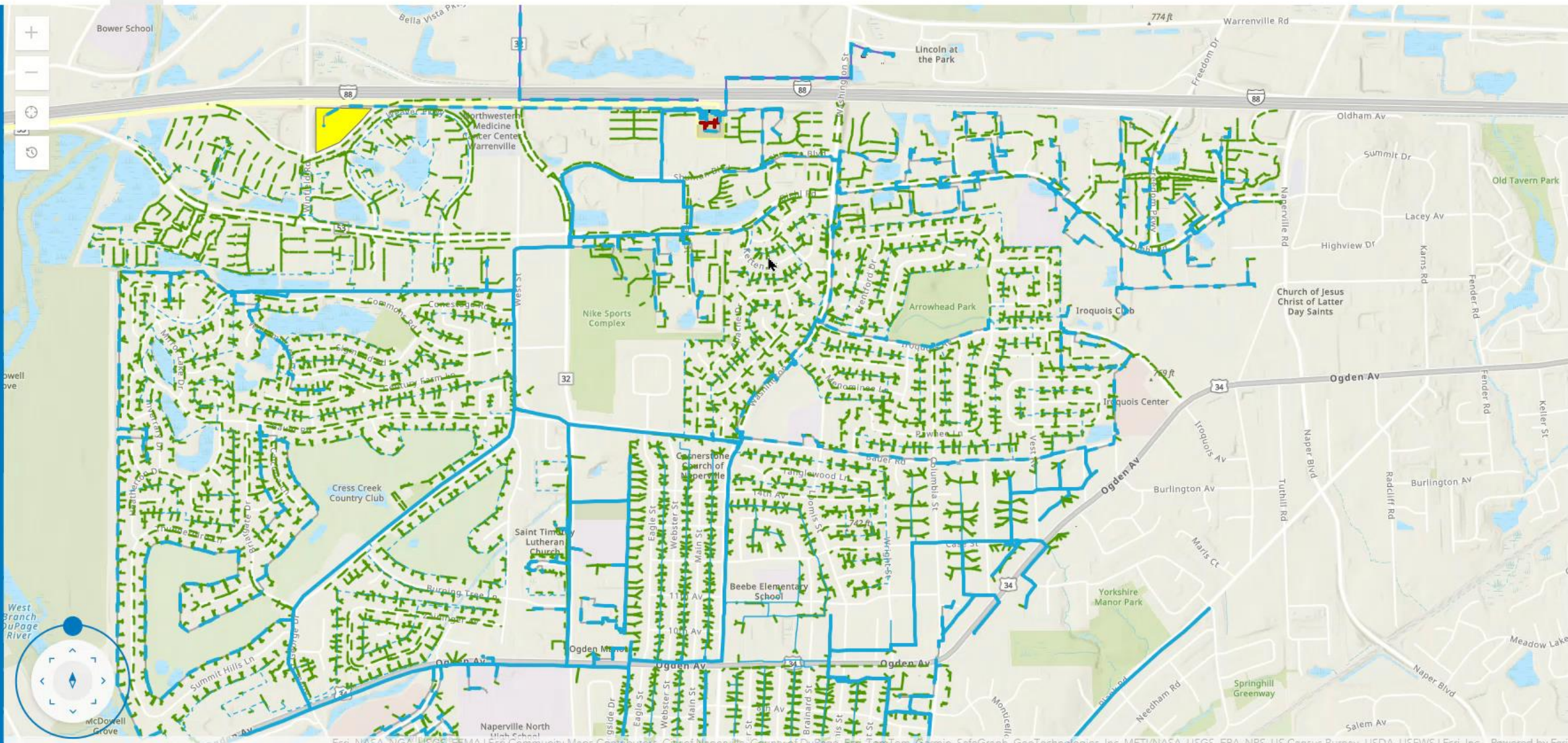
Subnetwork Optimisation



Coordinating processes



- Work order ID
- Validation 137
- Find
- Trace
- Versioning
- Layers
- Plans





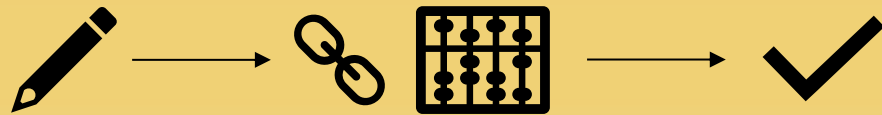
Customer Workflows



Asset Editing



Advanced Digitising

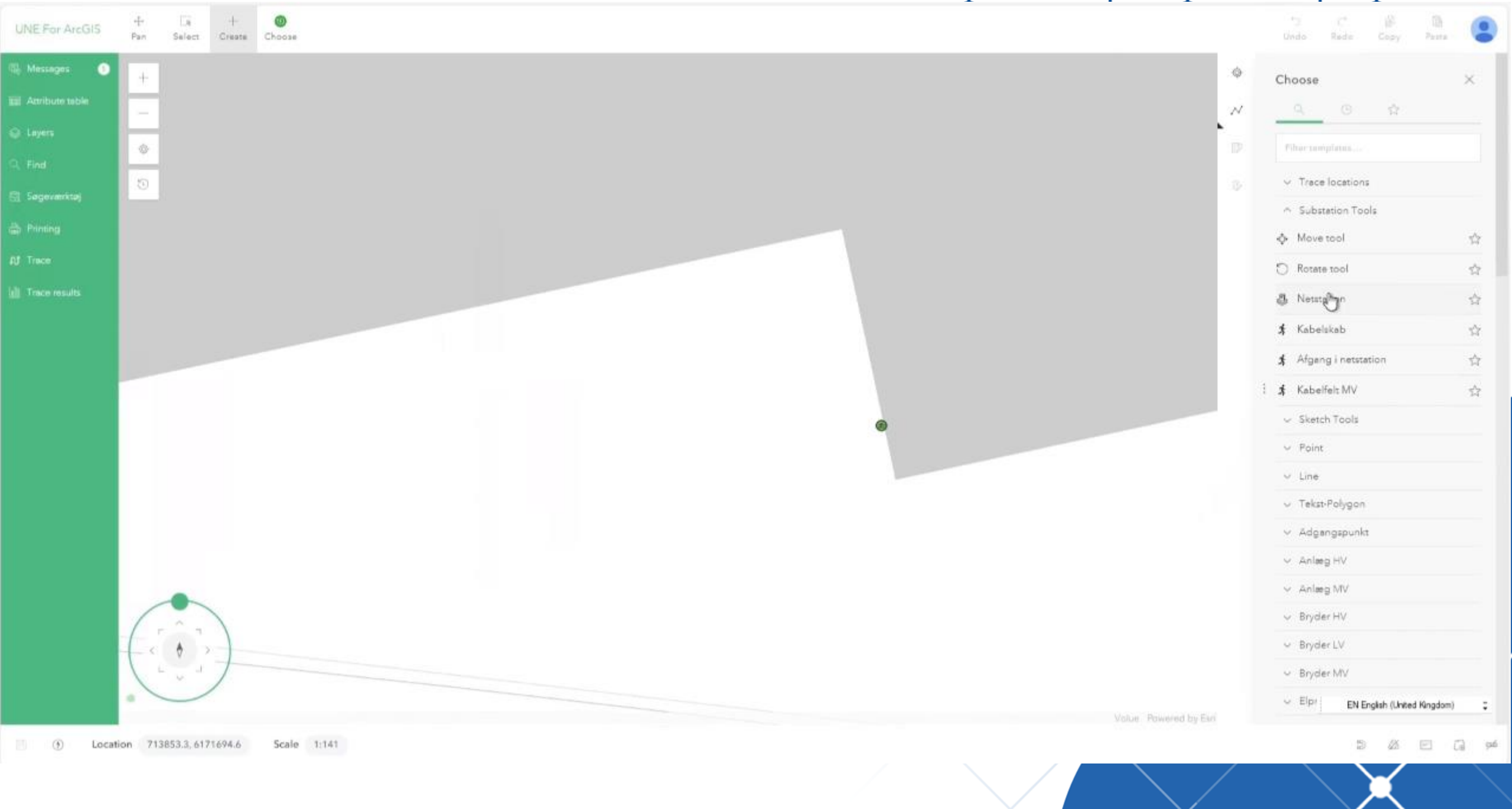


Subnetwork Optimisation



Coordinating processes





UNE For ArcGIS

- Pan
- Select
- Create
- Choose

- Undo
- Redo
- Copy
- Paste

- Messages
- Attribute table
- Layers
- Find
- Søgeresultater
- Printing
- Trace
- Trace results

Choose

Filter templates...

- Trace locations
- Substation Tools
 - Move tool
 - Rotate tool
 - Netstation
 - Kabelskab
 - Afgang i netstation
 - Kabelfelt MV
- Sketch Tools
 - Point
 - Line
 - Tekst-Polygon
 - Adgangspunkt
 - Anlæg HV
 - Anlæg MV
 - Bryder HV
 - Bryder LV
 - Bryder MV
- Elpr...

Location 713853.3, 6171694.6 Scale 1:141

Value Powered by Esri



Customer Workflows



Asset Editing



Advanced Digitising



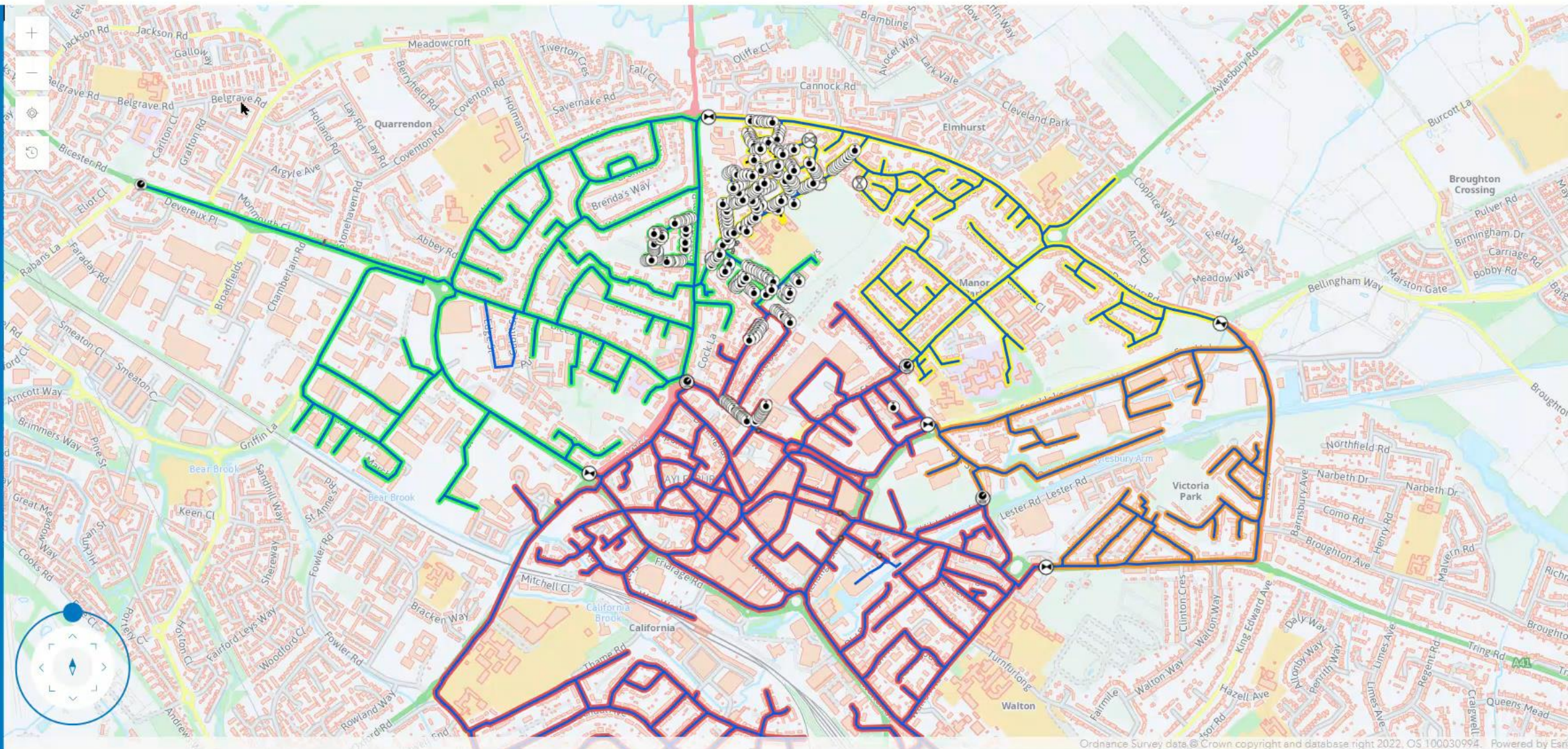
Subnetwork Optimisation



Coordinating processes



- Find
- Trace
- Layers
- Versioning
- Plans
- Custom panel





Customer Workflows



Asset Editing



Advanced Digitising



Subnetwork Optimisation



Coordinating processes





+ Create

My Jobs

My Group Jobs

All Jobs

Custom Search

Details

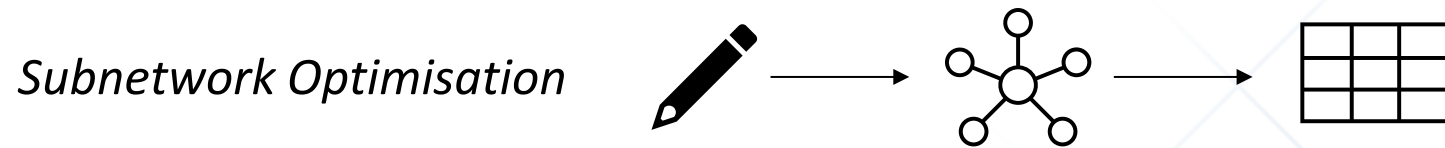
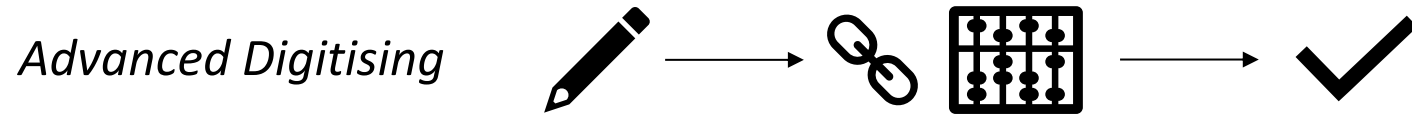
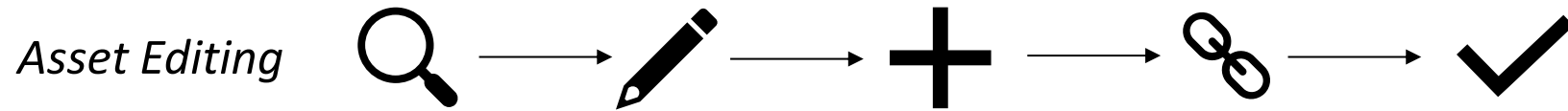


No Jobs Matched





Summary





What's New in UNE?

Subtype Group Layers

Data Rules

Control how data is edited in the application

Data

Topology

Connectivity

Application

WIREFRAME EDITOR DATA RULES EDITOR

LAUNCH SAVE RESET

SINGLE LAYER MULTI LAYER CUSTOM

Structure Boundary Specify what constitutes a legal shape for features in this layer.

Structure Line This subtype layer does not have its own settings. It will use the rules defined in the parent layer. ADD

Structure Junction

ElectricSubnetLine

Electric Line

Electric Junction

Electric Assembly

Electric Device

Dirty Areas

Structure Edge Object

Structure Junction Object

Electric Edge Object

English (US)

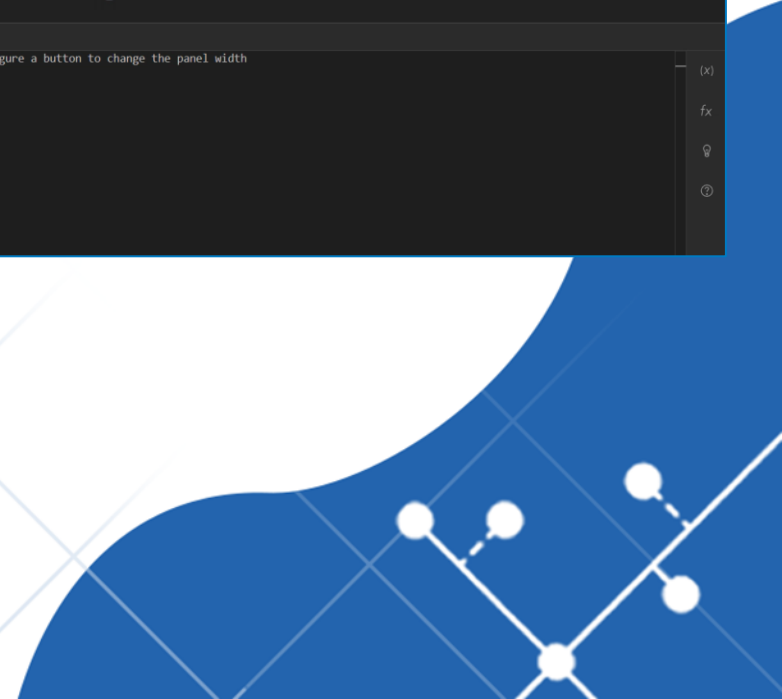
SAVE RESET

Enhanced Arcade Editor

New Languages

Script defining actions to run

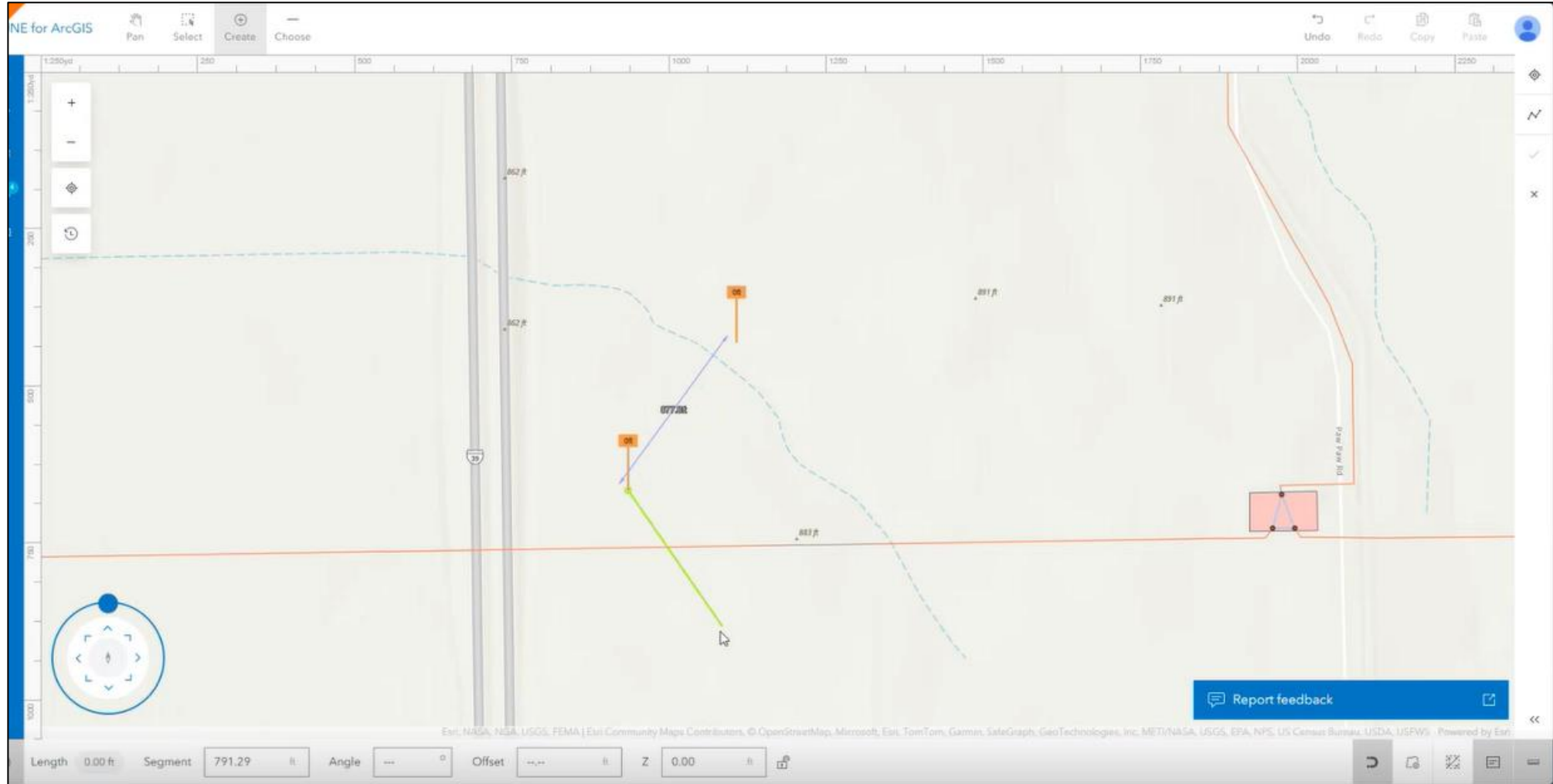
```
Run
1 //Configure a button to change the panel width
2 |
```





The Road Ahead...

Z-Enabled Values

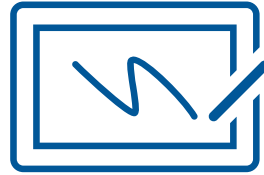




Utility Network Editor



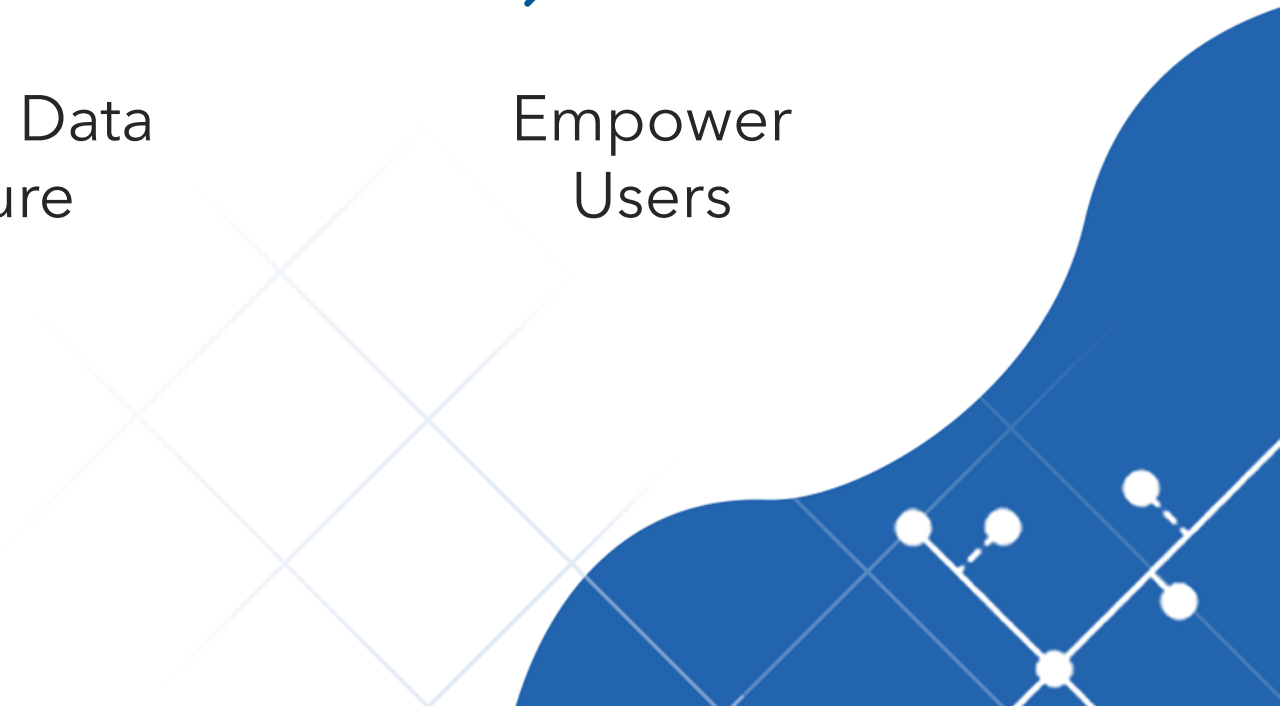
Web Solution



Improve Data
Capture



Empower
Users



Thank you



**International
Sales Manager**

Ethan
Hetherington

ehetherington@esriuk.com



**Pre-Sales
Consultant - Utilities**

Izzy
Morton



For further product information
and to access a TRIAL



esriuk.com/une-for-arcgis